

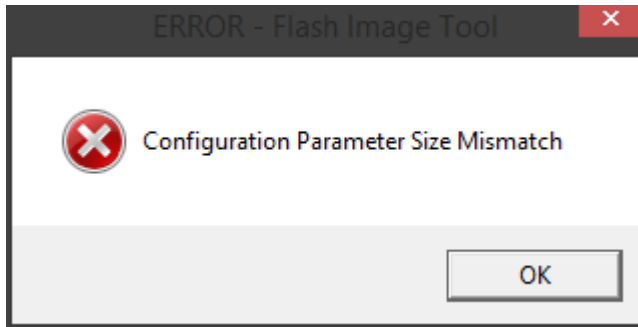
## WARNING:

First try **FITC v7.1.20.1119**. Check that you can import and build your image,

**WITHOUT ANY ERRORS!**

If you see this or any other error message while importing or building an image,

**DO NOT CONTINUE!**



Try **FITC v7.1.11.1069** instead. Check that you can import and build your image,

**WITHOUT ANY ERRORS!**

If the errors persist and you are loading a proper ME7-only image,

**DO NOT CONTINUE!**

**&**

**LET ME KNOW!**

## NOTE:

These **FITC v7** tools are **ONLY** for systems with **ME7** firmware images.

For upgraded Cougar Point (6-series) or Patsburg (X79/C600) systems with **ME8**, use

**ONLY FITC v8** releases!